

Laser. Marking. Solutions.



Business Fiber UV

Built to last

Laser marking with guaranteed quality

When marking a workpiece, the goal is to apply a permanent, high-contrast, high-resolution identifying mark to it. The impact on the material, along with any changes to its properties, needs to be kept to a minimum.

Business Fiber UV laser systems are the perfect solution for fulfilling these requirements.

To ensure that they will always run smoothly, our products are subject to strict quality control at both the development and the production stage. This guarantees safe, reliable operation from machinery that will stand the test of time.

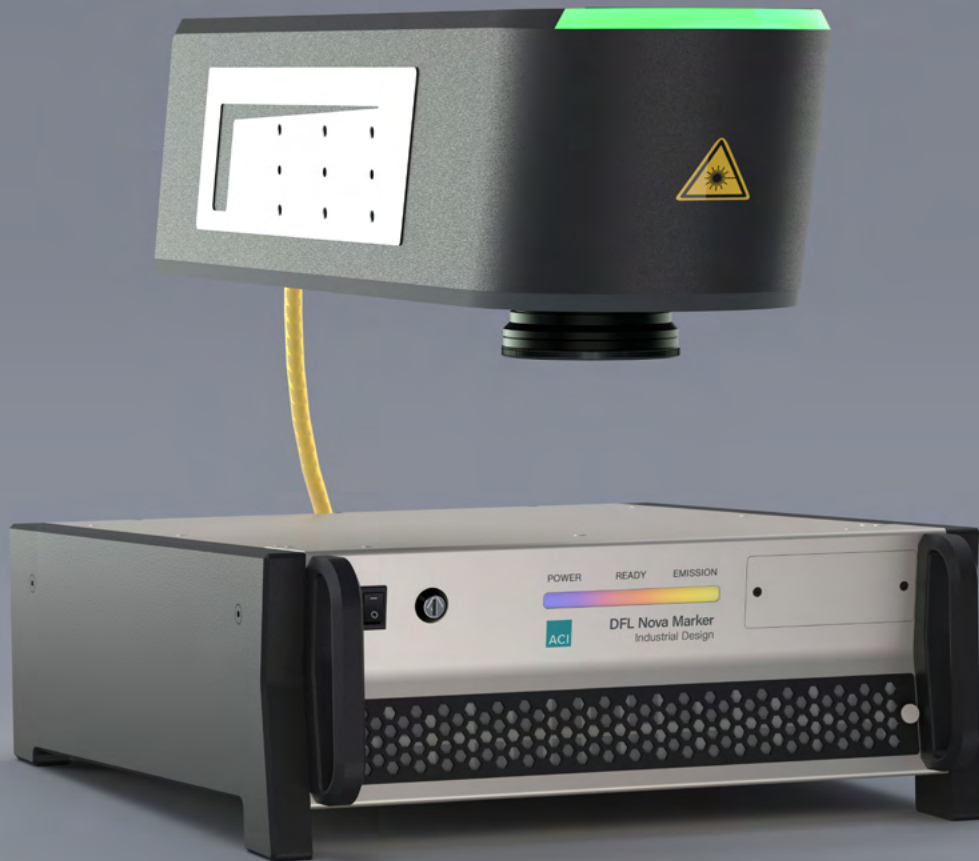
The functional, compact design of these laser systems is taking industrial laser marking to new places.

INHALTE

- Introduction DFL Nova Marker | Page 3
- Applications | Page 4
- Technical Data | Page 5
- Software control | Page 7
- Partnership with ACI | Page 8
- Contact details, legal information | Page 9

Note: Errors and omissions excepted. All information is without guarantee.

DFL Nova Marker



DFL Nova Marker

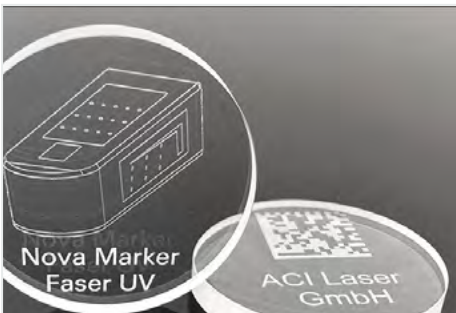
Laser marker for industrial applications

This compact laser system has been specially designed for use in production lines in industrial environments. Its housing is protected against the ingress of dust and water splashing against it, and the versatility of this housing means that it can be installed with ease wherever needed. The laser system is designed as 19-inch built-in device depending on the application in different power classes and beam qualities depending on the application.

→ Technical specifications

Applications

The DFL Nova Marker has been specially developed for demanding marking and engraving applications. It is ideal for marking plastics, ceramics and for ultra-fine engraving on metals. The UV fiber laser offers optimum conditions for high-precision fine cutting and structuring processes, for example in microelectronics, semiconductor production or medical technology.



Glass engraving on microscope slide



Laser marking on metal drills



Black marking on plastic



Fine structuring of precious metal



Depaneling



Wood engraving



Deep engraving on ceramic

Technical specifications

DFL Nova Marker Business Fiber UV

Laser type	Diode-pumped fiber laser (Yb:fiber)	
Operating mode	pulsed	
Laser power (max.)	3 W	6 W
Beam quality	M ² < 1,4	
Wave length	355 nm	
Pulse peak power (max.)	10 kW	
Pulse energy (max.)	10 µJ	20 µJ
Pulse duration	1,5 ns	
Pulse rate	10-300 kHz	
Transport fiber	3 m	
Laser class	4 (optional 1)	
Objective	F-Theta 160	
Size of marking area	110 x 110 mm	
Power consumption (max.)	800 W	
Mains connection	85 - 264 VAC / 10 A / 50-60 Hz	
Weight of head/ supply unit	15 kg / 25 kg	
Supply unit dimensions (l x w x h)	Table top: 580 × 488 × 190 mm 19 inch unit: 580 × 483 × 157 mm	
Laser head dimensions (l x w x h)	709 × 201 × 170 mm	
Software	Magic Mark V3	
Interfaces	2 serial ports (RS232/RS485)* 2 Ethernet ports* USB port Interlock connection Laser-control interface with 8 digital inputs/outputs Power input module Differential inputs for "marking on the fly"	
Functional safety acc. to DIN EN ISO 13849-1	PLe	

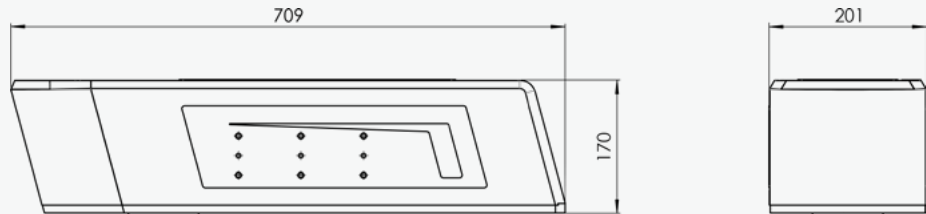
* system-dependent

DFL Nova Marker Business Fiber UV

Laser head

Dimensions (l × w × h)
709 × 201 × 170 mm

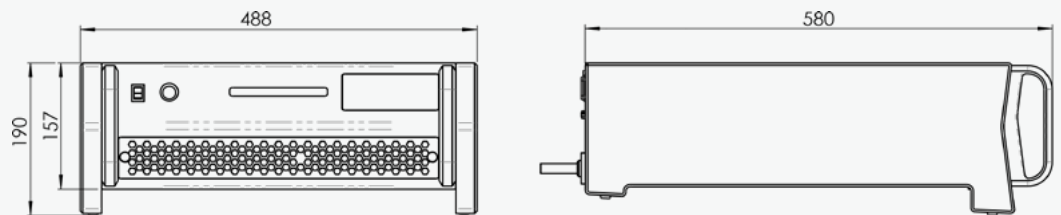
Weight
15 kg



Supply unit for tabletop system

Dimensions (l × w × h)
580 × 488 × 190 mm

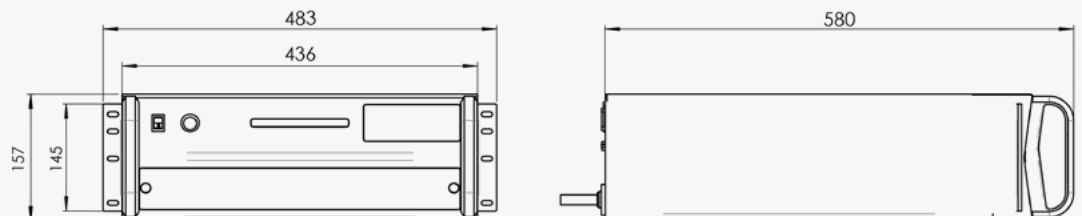
Weight
25 kg



Supply unit for 19" built-in system

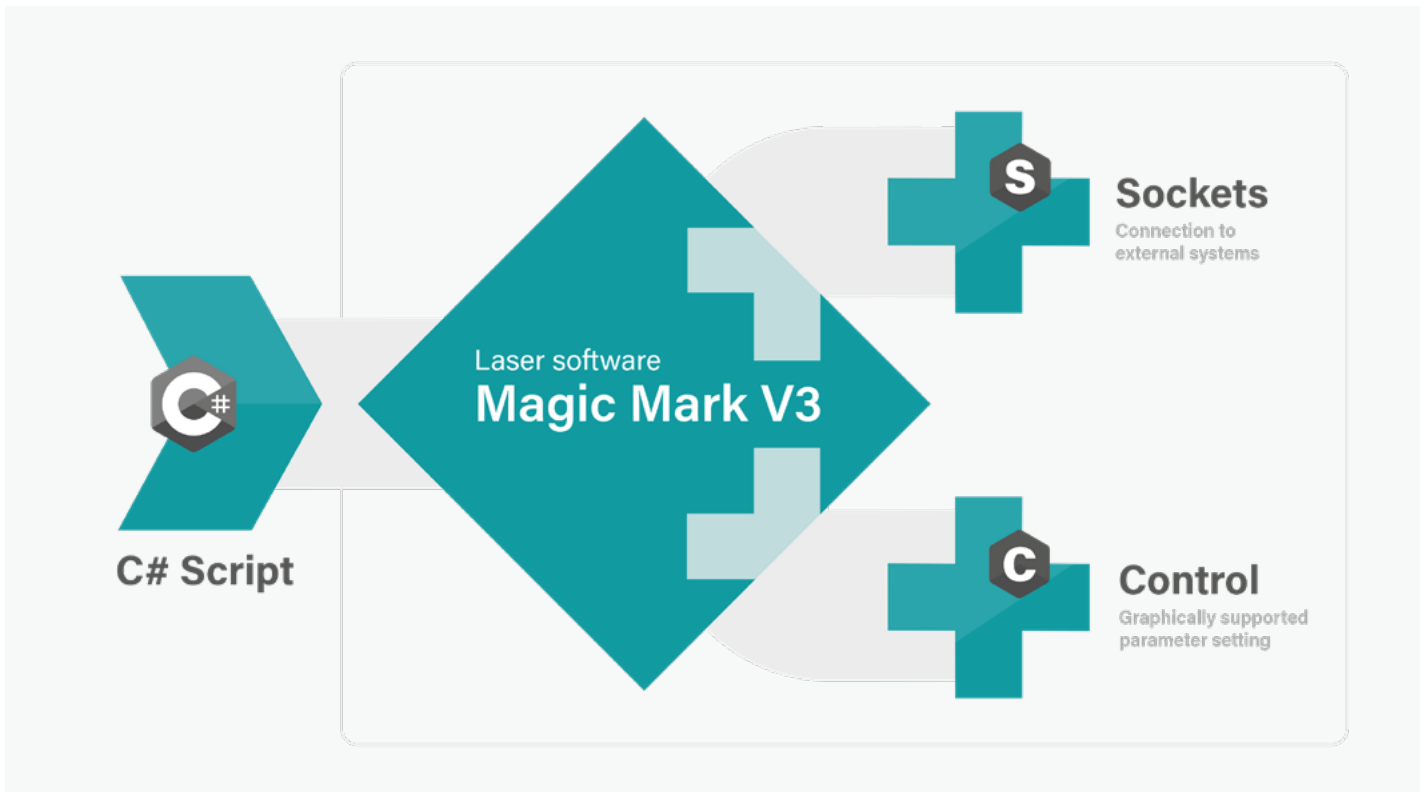
Dimensions (l × w × h)
580 × 483 × 157 mm

Weight
22 kg



Software control

The modern software architecture of the **Magic Mark V3** laser marking software enables targeted access to all available functions and allows users to control the laser and laser peripherals (workstation/axis of rotation, etc.).



Internal programming

VB.Net [Winwrap Basic]
integrated into Magic Mark V3

External programmierung

C#.Net [MS Visual Studio]
Access to class library

Advantages of Magic Mark V3

Software package
included with product

Predefinable
parameter sets

Plugins allow easy
addition of functions





Partnership with ACI Laser

Customer benefits

The search for excellent partnerships is at the heart of everything we do. We offer our customers sustainable solutions based on all-encompassing advice, reliability and stability.

ACI Laser embodies:

- ✓ Made in Germany development and production with over 20 years of experience
- ✓ Complete solutions from a single source: Laser systems, protective housings, software and accessories
- ✓ Customisable laser systems
- ✓ Functions can easily be added to the software using plugins


Made in Germany



We will be happy to advise you.

We guarantee you a customized overall solution that meets the requirements of your application. You will receive intensive advice from our experienced sales team. We look forward to receiving your inquiry.

Company headquarters

Steinbrüchenstr. 14
99428 Grammetal/ OT Nohra
Germany
T +49 3643 41520
kontakt@aci-laser.de